

**the wedding mintz**

 Sample ID: SA-220207-7076  
 Batch: 210050  
 Type: Finished Products  
 Matrix: Concentrate - Distillate

 Received: 02/09/2022  
 Completed: 02/22/2022

**Client**  
 KaliBloom  
 Miami, FL  
 USA

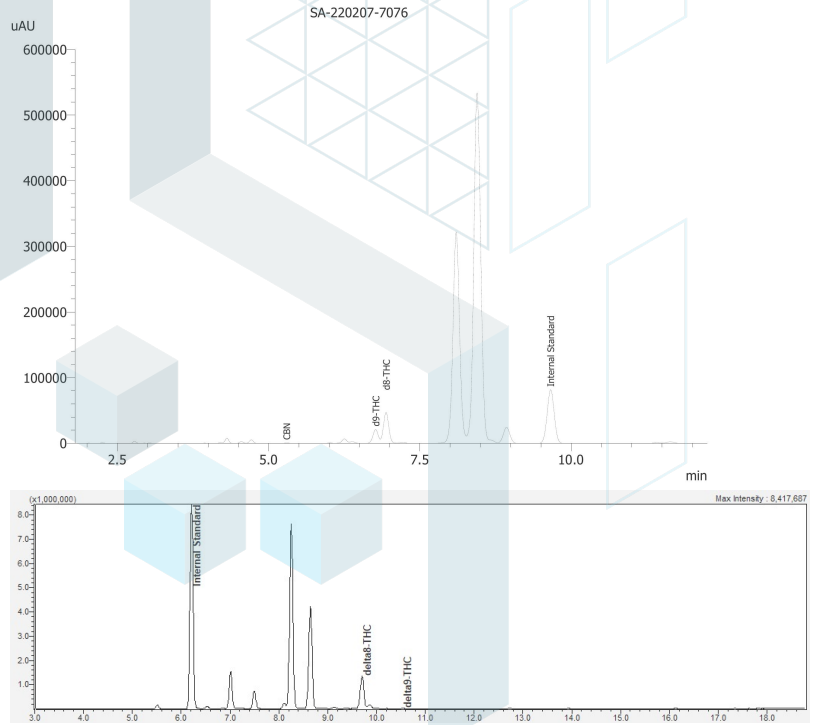
**Summary**

Test	Date Tested	Status
Cannabinoids	02/22/2022	Tested
Cannabinoids (Additional)	02/22/2022	Tested
Heavy Metals	02/14/2022	Tested
Microbials	02/16/2022	Tested
Residual Solvents	02/17/2022	Tested
Terpenes	02/22/2022	Tested

**Cannabinoids by HPLC-PDA, LC-MS/MS, and/or GC-MS/MS**

<b>0.0295 %</b>	<b>3.23 %</b>	<b>3.29 %</b>	<b>Not Tested</b>	<b>Not Tested</b>	<b>Yes</b>
Total Δ9-THC	Δ8-THC	Total Cannabinoids	Moisture Content	Foreign Matter	Internal Standard Normalization

Analyte	LOD (%)	LOQ (%)	Result (%)	Result (mg/g)
CBC	0.0095	0.0284	ND	ND
CBCA	0.0181	0.0543	ND	ND
CBCV	0.006	0.018	ND	ND
CBD	0.0081	0.0242	ND	ND
CBDA	0.0043	0.013	ND	ND
CBDV	0.0061	0.0182	ND	ND
CBDVA	0.0021	0.0063	ND	ND
CBG	0.0057	0.0172	ND	ND
CBGA	0.0049	0.0147	ND	ND
CBL	0.0112	0.0335	ND	ND
CBLA	0.0124	0.0371	ND	ND
CBN	0.0056	0.0169	0.0223	0.223
CBNA	0.006	0.0181	ND	ND
Δ8-THC	0.0104	0.0312	3.23	32.3
Δ9-THC	0.0076	0.0227	0.0295	0.295
Δ9-THCA	0.0084	0.0251	ND	ND
Δ9-THCV	0.0069	0.0206	ND	ND
Δ9-THCVA	0.0062	0.0186	ND	ND
<b>Total Δ9-THC</b>			<b>0.0295</b>	<b>0.295</b>
<b>Total CBD</b>			<b>ND</b>	<b>ND</b>
<b>Total</b>			<b>3.29</b>	<b>32.9</b>



ND = Not Detected; NT = Not Tested; LOD = Limit of Detection; LOQ = Limit of Quantitation; RL = Reporting Limit; Δ = Delta; Total Δ9-THC = Δ9-THCA \* 0.877 + Δ9-THC; Total CBD = CBDA \* 0.877 + CBD;



 Generated By: Alex Morris  
 Quality Assurance Manager  
 Date: 02/23/2022



 Tested By: Scott Caudill  
 Senior Scientist  
 Date: 02/22/2022

 ISO/IEC 17025:2017 Accredited  
 Accreditation #108651


**the wedding mintz**

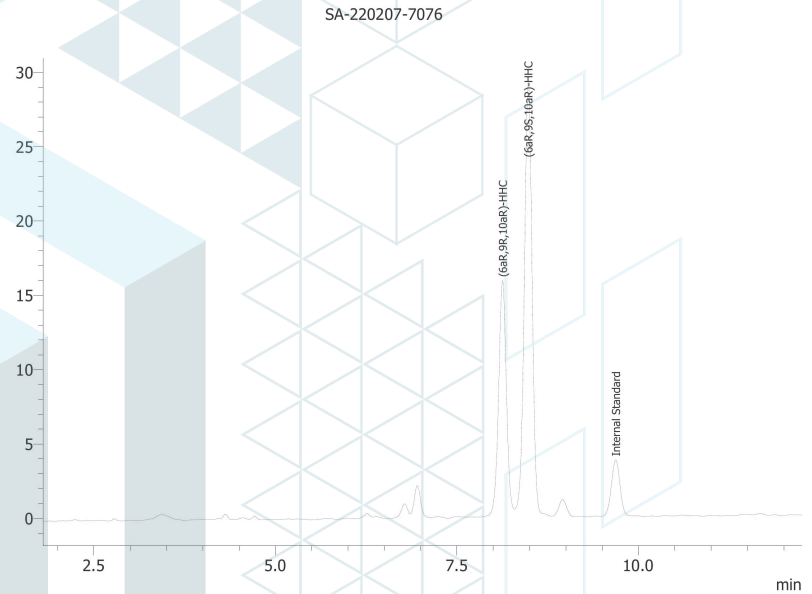
 Sample ID: SA-220207-7076  
 Batch: 210050  
 Type: Finished Products  
 Matrix: Concentrate - Distillate

 Received: 02/09/2022  
 Completed: 02/22/2022

**Client**  
 KaliBloom  
 Miami, FL  
 USA

**Cannabinoids by HPLC-PDA, LC-MS/MS, and/or GC-MS/MS**

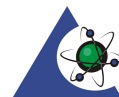
Analyte	LOD (%)	LOQ (%)	Result (%)	Result (mg/g)	mAU
(6aR,9R)- $\Delta^9$ -THC			32.1	321	
(6aR,9S)- $\Delta^9$ -THC			63.9	639	
<b>Total Additional Cannabinoids</b>			<b>96.0</b>	<b>960</b>	
<b>Total</b>			<b>99.3</b>	<b>993</b>	


 ND = Not Detected; NT = Not Tested; LOD = Limit of Detection; LOQ = Limit of Quantitation; RL = Reporting Limit;  $\Delta$  = Delta; Total  $\Delta^9$ -THC =  $\Delta^9$ -THCA \* 0.877 +  $\Delta^9$ -THC; Total CBD = CBDA \* 0.877 + CBD;



 Generated By: Alex Morris  
 Quality Assurance Manager  
 Date: 02/23/2022



 Tested By: Scott Caudill  
 Senior Scientist  
 Date: 02/22/2022

 ISO/IEC 17025:2017 Accredited  
 Accreditation #108651


## the wedding mintz

Sample ID: SA-220207-7076  
Batch: 210050  
Type: Finished Products  
Matrix: Concentrate - Distillate

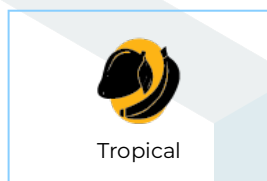
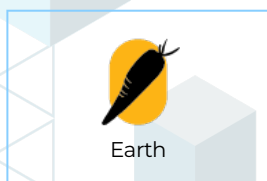
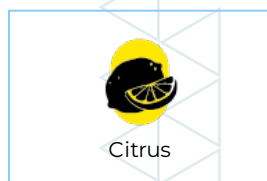
Received: 02/09/2022  
Completed: 02/22/2022

**Client**  
KaliBloom  
Miami, FL  
USA

## Terpenes by HS-GC-MS/MS

Analyte	LOD (%)	LOQ (%)	Result (%)	Analyte	LOD (%)	LOQ (%)	Result (%)
α-Bisabolol	0.00001	0.00005	0.137807	Limonene	0.00001	0.00005	0.344309
(+)-Borneol	0.00001	0.00005	ND	Linalool	0.00001	0.00005	0.037578
Camphene	0.00001	0.00005	0.01128	β-myrcene	0.00001	0.00005	0.23273
Camphor	0.00001	0.00005	ND	Nerol	0.00001	0.00005	ND
3-Carene	0.00001	0.00005	ND	cis-Nerolidol	0.00001	0.00005	ND
β-Caryophyllene	0.00001	0.00005	0.06414	trans-Nerolidol	0.00001	0.00005	0.021753
Caryophyllene Oxide	0.00001	0.00005	ND	Ocimene	0.00001	0.00005	ND
α-Cedrene	0.00001	0.00005	ND	α-Phellandrene	0.00001	0.00005	0.012948
Cedrol	0.00001	0.00005	ND	α-Pinene	0.00001	0.00005	0.049011
Eucalyptol	0.00001	0.00005	ND	β-Pinene	0.00001	0.00005	0.044211
Fenchone	0.00001	0.00005	ND	Pulegone	0.00001	0.00005	ND
Fenchyl Alcohol	0.00001	0.00005	0.043917	Sabinene	0.00001	0.00005	ND
Geraniol	0.00001	0.00005	ND	Sabinene Hydrate	0.00001	0.00005	ND
Geranyl Acetate	0.00001	0.00005	ND	α-Terpinene	0.00001	0.00005	ND
Guaiol	0.00001	0.00005	ND	γ-Terpinene	0.00001	0.00005	ND
Hexahydrothymol	0.00001	0.00005	0.169735	α-Terpineol	0.00001	0.00005	0.019992
α-Humulene	0.00001	0.00005	0.066335	γ-Terpineol	0.00001	0.00005	ND
Isoborneol	0.00001	0.00005	0.011486	Terpinolene	0.00001	0.00005	0.008675
Isopulegol	0.00001	0.00005	ND	<b>Total Terpenes (%)</b>			<b>1.48</b>

ND = Not Detected; NT = Not Tested; LOD = Limit of Detection; LOQ = Limit of Quantitation; P = Pass; F = Fail; RL = Reporting Limit



## Heavy Metals by ICP-MS

Analyte	LOD (ppb)	LOQ (ppb)	Result (ppb)
Arsenic	2	20	ND
Cadmium	1	20	ND
Lead	2	20	ND
Mercury	12	50	ND

ND = Not Detected; NT = Not Tested; LOD = Limit of Detection; LOQ = Limit of Quantitation; P = Pass; F = Fail; RL = Reporting Limit

*A. Morris*

Generated By: Alex Morris  
Quality Assurance Manager  
Date: 02/23/2022

*N. Howard*

Tested By: Nicholas Howard  
Senior Scientist  
Date: 02/22/2022



**the wedding mintz**

 Sample ID: SA-220207-7076  
 Batch: 210050  
 Type: Finished Products  
 Matrix: Concentrate - Distillate

 Received: 02/09/2022  
 Completed: 02/22/2022

**Client**  
 KaliBloom  
 Miami, FL  
 USA

**Microbials by PCR and Plating**

Analyte	LOD (CFU/g)	Result (CFU/g)	Result (Qualitative)
Coliforms	1	ND	
Aerobic Bacteria	1	ND	
Salmonella			Not Detected per 1 gram
Total Enterobacteriaceae			Not Detected per 1 gram

ND = Not Detected; NT = Not Tested; LOD = Limit of Detection; LOQ = Limit of Quantitation; CFU = Colony Forming Units; P = Pass; F = Fail; RL = Reporting Limit



 Generated By: Alex Morris  
 Quality Assurance Manager  
 Date: 02/23/2022



 Tested By: Alex Morris  
 Quality Assurance Manager  
 Date: 02/16/2022


**the wedding mintz**

 Sample ID: SA-220207-7076  
 Batch: 210050  
 Type: Finished Products  
 Matrix: Concentrate - Distillate

 Received: 02/09/2022  
 Completed: 02/22/2022

**Client**  
 KaliBloom  
 Miami, FL  
 USA

**Residual Solvents by HS-GC-MS/MS**

Analyte	LOD (ppm)	LOQ (ppm)	Result (ppm)	Analyte	LOD (ppm)	LOQ (ppm)	Result (ppm)
Acetone	167	500	ND	Ethylene Glycol	21	62	ND
Acetonitrile	14	41	ND	Ethylene Oxide	0.5	1	ND
Benzene	0.5	1	ND	Heptane	167	500	ND
Butane	167	500	ND	n-Hexane	10	29	ND
1-Butanol	167	500	ND	Isobutane	167	500	ND
2-Butanol	167	500	ND	Isopropyl Acetate	167	500	ND
2-Butanone	167	500	ND	Isopropyl Alcohol	167	500	<RL
Chloroform	2	6	ND	Isopropylbenzene	167	500	ND
Cyclohexane	129	388	ND	Methanol	100	300	ND
1,2-Dichloroethane	0.5	1	ND	2-Methylbutane	10	29	ND
1,2-Dimethoxyethane	4	10	ND	Methylene Chloride	20	60	ND
Dimethyl Sulfoxide	167	500	ND	2-Methylpentane	10	29	ND
N,N-Dimethylacetamide	37	109	ND	3-Methylpentane	10	29	ND
2,2-Dimethylbutane	10	29	ND	n-Pentane	167	500	ND
2,3-Dimethylbutane	10	29	ND	1-Pentanol	167	500	ND
N,N-Dimethylformamide	30	88	ND	n-Propane	167	500	ND
2,2-Dimethylpropane	167	500	ND	1-Propanol	167	500	ND
1,4-Dioxane	13	38	ND	Pyridine	7	20	ND
Ethanol	167	500	ND	Tetrahydrofuran	24	72	ND
2-Ethoxyethanol	6	16	ND	Toluene	30	89	ND
Ethyl Acetate	167	500	ND	Trichloroethylene	3	8	ND
Ethyl Ether	167	500	ND	Tetramethylene Sulfone	6	16	ND
Ethylbenzene	3	7	ND	Xylenes (o-, m-, and p-)	73	217	ND

ND = Not Detected; NT = Not Tested; LOD = Limit of Detection; LOQ = Limit of Quantitation; P = Pass; F = Fail; RL = Reporting Limit



 Generated By: Alex Morris  
 Quality Assurance Manager  
 Date: 02/23/2022



 Tested By: Scott Caudill  
 Senior Scientist  
 Date: 02/17/2022


## the wedding mintz

Sample ID: SA-220207-7076  
 Batch: 210050  
 Type: Finished Products  
 Matrix: Concentrate - Distillate

Received: 02/09/2022  
 Completed: 02/22/2022

**Client**  
 KaliBloom  
 Miami, FL  
 USA

## Reporting Limit Appendix

### Heavy Metals - Colorado CDPHE

Analyte	Limit (ppb)	Analyte	Limit (ppb)
Arsenic	1500	Lead	500
Cadmium	500	Mercury	1500

### Microbials - Colorado CDPHE

Analyte	Limit (CFU/g)	Analyte	Limit (CFU/g)
Coliforms	100	Aerobic Bacteria	10000

### Residual Solvents - USP 467

Analyte	Limit (ppm)	Analyte	Limit (ppm)
Acetone	5000	Ethylene Glycol	620
Acetonitrile	410	Ethylene Oxide	1
Benzene	2	Heptane	5000
Butane	5000	n-Hexane	290
1-Butanol	5000	Isobutane	5000
2-Butanol	5000	Isopropyl Acetate	5000
2-Butanone	5000	Isopropyl Alcohol	5000
Chloroform	60	Isopropylbenzene	5000
Cyclohexane	3880	Methanol	3000
1,2-Dichloroethane	5	2-Methylbutane	290
1,2-Dimethoxyethane	100	Methylene Chloride	600
Dimethyl Sulfoxide	5000	2-Methylpentane	290
N,N-Dimethylacetamide	1090	3-Methylpentane	290
2,2-Dimethylbutane	290	n-Pentane	5000
	290	1-Pentanol	5000
N,N-Dimethylformamide	880	n-Propane	5000
2,2-Dimethylpropane	5000	1-Propanol	5000
1,4-Dioxane	380	Pyridine	200
Ethanol	5000	Tetrahydrofuran	720
2-Ethoxyethanol	160	Toluene	890
Ethyl Acetate	5000	Trichloroethylene	80
Ethyl Ether	5000	Tetramethylene Sulfone	160
Ethylbenzene	70	Xylenes (o-, m-, and p-)	2170

