



D8Co Gummies
Sample Matrix:
CBD/HEMP
Edibles
(Ingestion)



License No. 800025015
FL License # CMTL-0003
CLIA No. 10D1094068

Certificate of Analysis

Compliance Test

KIND SPECTRUM
1624 MARKET ST.
DENVER, CO 80202

Batch # Black Watermelon D8 Gummies
Batch Date: 2021-02-28
Extracted From: Hemp

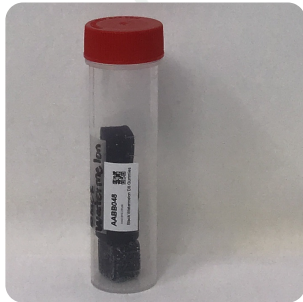
Sampling Method: MSP 7.3.1 Test Reg
State: Oregon

Order # KIN210302-080049
Order Date: 2021-03-02
Sample # AAB048

Sampling Date: 2021-03-03
Lab Batch Date: 2021-03-03
Completion Date: 2021-03-09

Initial Gross Weight: 31.736 g

Net Weight per Unit: 4605.000 mg



Product Image

Potency
Tested

Terpenes
Tested

Heavy Metals
Passed

Mycotoxins
Passed

Pesticides
Passed

Residual
Solvents
Passed

Listeria
Monocytogenes
Passed

Pathogenic
Passed

Potency - 11
Specimen Weight: 1511.500 mg

Tested
(HPLC/LCMS)

Potency Summary

Total THC None Detected	Total CBD None Detected
Total CBG None Detected	Total CBN None Detected
Other Cannabinoids 0.597%	Total Cannabinoids 27.492mg

Pieces For Panel: 4

Analyte	Dilution (1:n)	LOD (%)	LOQ (%)	Result (mg/g)	(%)
Delta-8 THC	1000.000	0.000026	0.001	5.970	0.597
CBC	1000.000	0.000018	0.001	<LOQ	<LOQ
THCV	1000.000	0.000007	0.001	<LOQ	<LOQ
CBD	1000.000	0.000054	0.001	<LOQ	<LOQ
Delta-9 THC	1000.000	0.000013	0.001	<LOQ	<LOQ
CBN	1000.000	0.000014	0.001	<LOQ	<LOQ
CBGA	1000.000	0.00008	0.001	<LOQ	<LOQ
CBG	1000.000	0.000248	0.001	<LOQ	<LOQ
CBDV	1000.000	0.000065	0.001	<LOQ	<LOQ
CBDA	1000.000	0.00001	0.001	<LOQ	<LOQ
THCA-A	1000.000	0.000032	0.001	<LOQ	<LOQ

Terpenes Summary

Analyte	Result (mg/ml) (%)
Total Terpenes: 0.000%	

Detailed Terpenes Analysis is on the following page

Xueli Gao
Ph.D., DABT
Lab Toxicologist

Aixia Sun
D.H.Sc., M.Sc., B.Sc., MT (AAB)
Lab Director/Principal Scientist



Definitions and Abbreviations used in this report: *Total CBD = CBD + (CBD-A * 0.877), *Total THC = THCA-A * 0.877 + Delta 9 THC, *CBG Total = (CBGA * 0.877) + CBG, *CBN Total = (CBNA * 0.877) + CBN, *Other Cannabinoids Total = CBC + CBDV + THCV + THCV-A, *Total Detected Cannabinoids = CBD Total + CBG Total + CBN Total + THC Total + CBC + CBDV + THCV + THCV-A, *Analyte Details above show the Dry Weight Concentrations unless specified as 12% moisture concentration. (mg/ml) = Milligrams per Milliliter, LOQ = Limit of Quantitation, LOD = Limit of Detection, Dilution = Dilution Factor (ppb) = Parts per Billion, (%) = Percent, (cfu/g) = Colony Forming Unit per Gram (cfu/g) = Colony Forming Unit per Gram, LOD = Limit of Detection, (µg/g) = Microgram per Gram (ppm) = Parts per Million, (ppm) = (µg/g), (aw) = aw (area ratio) = Area Ratio, (mg/Kg) = Milligram per Kilogram, *Measurement of Uncertainty = +/- 5%



This report shall not be reproduced, without written approval, from ACS Laboratory. The results of this report relate only to the material or product analyzed. Test results are confidential unless explicitly waived otherwise. Accredited by a third-party accrediting body as a competent testing laboratory pursuant to ISO/IEC 17025 of the International Organization for Standardization.



License No. 800025015
FL License # CMTL-0003
CLIA No. 10D1094068

Certificate of Analysis

Compliance Test

KIND SPECTRUM
1624 MARKET ST.
DENVER, CO 80202

Batch # Black Watermelon D8 Gummies
Batch Date: 2021-02-28
Extracted From: Hemp

Sampling Method: MSP 7.3.1 Test Reg
State: Oregon

Order # KIN210302-080049
Order Date: 2021-03-02
Sample # AAB048

Sampling Date: 2021-03-03
Lab Batch Date: 2021-03-03
Completion Date: 2021-03-09

Initial Gross Weight: 31.736 g

Net Weight per Unit: 4605.000 mg



Terpenes - FL

Specimen Weight: 46.760 mg

Tested
(GC)

Pieces For Panel: 4 Dilution Factor: 1.000

Analyte	LOQ (%)	Result (mg/g)	(%)	Analyte	LOQ (%)	Result (mg/g)	(%)
(+)-Cedrol	0.02	<LOQ		Nerol	0.02	<LOQ	
Geraniol	0.02	<LOQ		Geranyl acetate	0.02	<LOQ	
Guaiaol	0.02	<LOQ		Hexahydrothymol	0.02	<LOQ	
Isoborneol	0.02	<LOQ		Isopulegol	0.02	<LOQ	
Linalool	0.02	<LOQ		Ocimene	0.014	<LOQ	
Fenchyl Alcohol	0.02	<LOQ		Pulegone	0.02	<LOQ	
Sabinene	0.02	<LOQ		Sabinene Hydrate	0.02	<LOQ	
Terpineol	0.02	<LOQ		Terpinolene	0.02	<LOQ	
trans-Caryophyllene	0.02	<LOQ		trans-Nerolidol	0.02	<LOQ	
Gamma-Terpinene	0.02	<LOQ		Fenchone	0.02	<LOQ	
(R)-(+)-Limonene	0.02	<LOQ		alpha-Terpinene	0.02	<LOQ	
3-Carene	0.02	<LOQ		alpha-Bisabolol	0.02	<LOQ	
alpha-Cedrene	0.02	<LOQ		alpha-Humulene	0.02	<LOQ	
alpha-Phellandrene	0.02	<LOQ		alpha-Pinene	0.02	<LOQ	
Farnesene	0.02	<LOQ		beta-Myrcene	0.02	<LOQ	
beta-Pinene	0.02	<LOQ		Borneol	0.04	<LOQ	
Camphene	0.02	<LOQ		Camphors	0.04	<LOQ	
Caryophyllene oxide	0.02	<LOQ		cis-Nerolidol	0.02	<LOQ	
Eucalyptol	0.02	<LOQ		Valencene	0.02	<LOQ	

Total Terpenes: 0.000%

Xueli Gao
Xueli Gao Lab Toxicologist
Ph.D., DABT

Aixia Sun
Aixia Sun Lab Director/Principal Scientist
D.H.Sc., M.Sc., B.Sc., MT (AAB)



Definitions and Abbreviations used in this report: *Total CBD = CBD + (CBD-A * 0.877), *Total THC = THCA-A * 0.877 + Delta 9 THC, *CBG Total = (CBGA * 0.877) + CBG, *CBN Total = (CBNA * 0.877) + CBN, *Other Cannabinoids Total = CBC + CBDV + THCV + THCV-A, *Total Detected Cannabinoids = CBD Total + CBG Total + CBN Total + THC Total + CBC + CBDV + THCV + THCV-A, *Analyte Details above show the Dry Weight Concentrations unless specified as 12% moisture concentration. (mg/ml) = Milligrams per Milliliter, LOQ = Limit of Quantitation, LOD = Limit of Detection, Dilution = Dilution Factor (ppb) = Parts per Billion, (%) = Percent, (cfu/g) = Colony Forming Unit per Gram (cfu/g) = Colony Forming Unit per Gram, , LOD = Limit of Detection, (µg/g) = Microgram per Gram (ppm) = Parts per Million, (ppm) = (µg/g), (aw) = aw (area ratio) = Area Ratio, (mg/Kg) = Milligram per Kilogram, *Measurement of Uncertainty = +/- 5%



This report shall not be reproduced, without written approval, from ACS Laboratory. The results of this report relate only to the material or product analyzed. Test results are confidential unless explicitly waived otherwise. Accredited by a third-party accrediting body as a competent testing laboratory pursuant to ISO/IEC 17025 of the International Organization for Standardization.



License No. 800025015
FL License # CMTL-0003
CLIA No. 10D1094068

Certificate of Analysis

Compliance Test

KIND SPECTRUM
1624 MARKET ST.
DENVER, CO 80202

Batch # Black Watermelon D8 Gummies
Batch Date: 2021-02-28
Extracted From: Hemp

Sampling Method: MSP 7.3.1 Test Reg
State: Oregon

Order # KIN210302-080049
Order Date: 2021-03-02
Sample # AABB048

Sampling Date: 2021-03-03
Lab Batch Date: 2021-03-03
Completion Date: 2021-03-09

Initial Gross Weight: 31.736 g

Net Weight per Unit: 4605.000 mg

H Heavy Metals

Specimen Weight: 251.640 mg

Passed
(ICP-MS)

Pieces For Panel: 4 Dilution Factor: 2.000

Analyte	LOQ (ppb)	Action Level (ppb)	Result (ppb)	Analyte	LOQ (ppb)	Action Level (ppb)	Result (ppb)
Arsenic (As)	100	1500	<LOQ	Cadmium (Cd)	100	500	<LOQ
Lead (Pb)	100	500	<LOQ	Mercury (Hg)	100	3000	<LOQ
Total Contaminant Load (TCL)		None Detected					

Mycotoxins

Specimen Weight: 193.100 mg

Passed
(LCMS)

Pieces For Panel: 4 Dilution Factor: 7.768

Analyte	LOQ (ppb)	Action Level (ppb)	Result (ppb)	Analyte	LOQ (ppb)	Action Level (ppb)	Result (ppb)
Aflatoxin B1	6	20	<LOQ	Aflatoxin B2	6	20	<LOQ
Aflatoxin G1	6	20	<LOQ	Aflatoxin G2	6	20	<LOQ
Ochratoxin A	12	20	<LOQ				

Xueli Gao
Xueli Gao Lab Toxicologist
Ph.D., DABT

Aixia Sun
Aixia Sun Lab Director/Principal Scientist
D.H.Sc., M.Sc., B.Sc., MT (AAB)



Definitions and Abbreviations used in this report: *Total CBD = CBD + (CBD-A * 0.877), *Total THC = THCA-A * 0.877 + Delta 9 THC, *CBG Total = (CBGA * 0.877) + CBG, *CBN Total = (CBNA * 0.877) + CBN, *Other Cannabinoids Total = CBC + CBDV + THCV + THCV-A, *Total Detected Cannabinoids = CBD Total + CBG Total + CBN Total + THC Total + CBC + CBDV + THCV + THCV-A, *Analyte Details above show the Dry Weight Concentrations unless specified as 12% moisture concentration. (mg/ml) = Milligrams per Milliliter, LOQ = Limit of Quantitation, LOD = Limit of Detection, Dilution = Dilution Factor (ppb) = Parts per Billion, (%) = Percent, (cfu/g) = Colony Forming Unit per Gram (cfu/g) = Colony Forming Unit per Gram, , LOD = Limit of Detection, (µg/g) = Microgram per Gram (ppm) = Parts per Million, (ppm) = (µg/g), (aw) = aw (area ratio) = Area Ratio, (mg/Kg) = Milligram per Kilogram, *Measurement of Uncertainty = +/- 5%



This report shall not be reproduced, without written approval, from ACS Laboratory. The results of this report relate only to the material or product analyzed. Test results are confidential unless explicitly waived otherwise. Accredited by a third-party accrediting body as a competent testing laboratory pursuant to ISO/IEC 17025 of the International Organization for Standardization.



D8Co Gummies
Sample Matrix:
CBD/HEMP
Edibles
(Ingestion)



License No. 800025015
FL License # CMTL-0003
CLIA No. 10D1094068

Certificate of Analysis

Compliance Test

KIND SPECTRUM
1624 MARKET ST.
DENVER, CO 80202

Batch # Black Watermelon D8 Gummies
Batch Date: 2021-02-28
Extracted From: Hemp

Sampling Method: MSP 7.3.1 Test Reg
State: Oregon

Order # KIN210302-080049
Order Date: 2021-03-02
Sample # AABB048

Sampling Date: 2021-03-03
Lab Batch Date: 2021-03-03
Completion Date: 2021-03-09

Initial Gross Weight: 31.736 g

Net Weight per Unit: 4605.000 mg

Pesticides **Passed**
(LCMS/GCMS)
Specimen Weight: 193.100 mg

Pieces For Panel: 4 Dilution Factor: 7.768

Analyte	LOQ (ppb)	Action Level (ppb)	Result (ppb)	Analyte	LOQ (ppb)	Action Level (ppb)	Result (ppb)
Abamectin	28.23	300	<LOQ	Acephate	30	3000	<LOQ
Acequinocyl	48	2000	<LOQ	Acetamiprid	30	3000	<LOQ
Aldicarb	30	100	<LOQ	Azoxystrobin	10	3000	<LOQ
Bifenazate	30	3000	<LOQ	Bifenthrin	30	500	<LOQ
Carbaryl	10	500	<LOQ	Chlorfenapyr	48	100	<LOQ
Chlorpyrifos	30	100	<LOQ	Clofentazine	30	500	<LOQ
Coumaphos	30	100	<LOQ	Cyfluthrin	30	1000	<LOQ
Cypermethrin	30	1000	<LOQ	Daminozide	30	100	<LOQ
Diazinon	30	200	<LOQ	Dichlorvos	30	100	<LOQ
Dimethoate	30	100	<LOQ	Dimethomorph	30	3000	<LOQ
Ethoprophos	30	100	<LOQ	Etofenprox	30	100	<LOQ
Etoxazole	30	1500	<LOQ	Fenhexamid	30	3000	<LOQ
Fenoxycarb	30	100	<LOQ	Fenpyroximate	30	2000	<LOQ
Fipronil	30	100	<LOQ	Flonicamid	30	2000	<LOQ
Fludioxonil	30	3000	<LOQ	Hexythiazox	30	2000	<LOQ
Imazalil	30	100	<LOQ	Imidacloprid	30	3000	<LOQ
Kresoxim Methyl	30	1000	<LOQ	Malathion	30	2000	<LOQ
Metalaxyl	10	3000	<LOQ	Methiocarb	30	100	<LOQ
Methomyl	30	100	<LOQ	Mevinphos	30	100	<LOQ
Myclobutanil	30	3000	<LOQ	Naled	30	500	<LOQ
Oxamyl	30	500	<LOQ	Pacllobutrazol	30	100	<LOQ
Parathion-methyl	48	100	<LOQ	Pentachloronitrobenzene	30	200	<LOQ
Permethrin	30	1000	<LOQ	Phosmet	30	200	<LOQ
Piperonylbutoxide	30	3000	<LOQ	Prallethrin	30	400	<LOQ
Propiconazole	30	1000	<LOQ	Propoxur	30	100	<LOQ
Pyrethrins	30	1000	<LOQ	Pyridaben	30	3000	<LOQ
Spinetoram	30	3000	<LOQ	Spiromesifen	30	3000	<LOQ
Spirotetramat	30	3000	<LOQ	Spiroxamine	30	100	<LOQ
Tebuconazole	30	1000	<LOQ	Thiacloprid	30	100	<LOQ
Thiamethoxam	30	1000	<LOQ	Trifloxystrobin	30	3000	<LOQ
Total Contaminant Load (TCL)		None Detected					

Xueli Gao
Xueli Gao Lab Toxicologist
Ph.D., DABT

Aixia Sun
Aixia Sun Lab Director/Principal Scientist
D.H.Sc., M.Sc., B.Sc., MT (AAB)



Definitions and Abbreviations used in this report: *Total CBD = CBD + (CBD-A * 0.877), *Total THC = THCA-A * 0.877 + Delta 9 THC, *CBG Total = (CBGA * 0.877) + CBG, *CBN Total = (CBNA * 0.877) + CBN, *Other Cannabinoids Total = CBC + CBDV + THCV + THCV-A, *Total Detected Cannabinoids = CBD Total + CBG Total + CBN Total + THC Total + CBC + CBDV + THCV + THCV-A, *Analyte Details above show the Dry Weight Concentrations unless specified as 12% moisture concentration. (mg/ml) = Milligrams per Milliliter, LOQ = Limit of Quantitation, LOD = Limit of Detection, Dilution = Dilution Factor (ppb) = Parts per Billion, (%) = Percent, (cfu/g) = Colony Forming Unit per Gram (cfu/g) = Colony Forming Unit per Gram, , LOD = Limit of Detection, (µg/g) = Microgram per Gram (ppm) = Parts per Million, (ppm) = (µg/g), (aw) = aw (area ratio) = Area Ratio, (mg/Kg) = Milligram per Kilogram, *Measurement of Uncertainty = +/- 5%



This report shall not be reproduced, without written approval, from ACS Laboratory. The results of this report relate only to the material or product analyzed. Test results are confidential unless explicitly waived otherwise. Accredited by a third-party accrediting body as a competent testing laboratory pursuant to ISO/IEC 17025 of the International Organization for Standardization.



License No. 800025015
FL License # CMTL-0003
CLIA No. 10D1094068

Certificate of Analysis

Compliance Test

KIND SPECTRUM
1624 MARKET ST.
DENVER, CO 80202

Batch # Black Watermelon D8 Gummies
Batch Date: 2021-02-28
Extracted From: Hemp

Sampling Method: MSP 7.3.1 Test Reg
State: Oregon

Order # KIN210302-080049
Order Date: 2021-03-02
Sample # AAB048

Sampling Date: 2021-03-03
Lab Batch Date: 2021-03-03
Completion Date: 2021-03-09

Initial Gross Weight: 31.736 g

Net Weight per Unit: 4605.000 mg

Residual Solvents - FL (CBD) **Passed**
(GCMS)

Specimen Weight: 12.600 mg

Pieces For Panel: 4 Dilution Factor: 1.000

Analyte	LOQ (ppm)	Action Level (ppm)	Result (ppm)	Analyte	LOQ (ppm)	Action Level (ppm)	Result (ppm)
1,1-Dichloroethane	0.16	8	<LOQ	1,2-Dichloroethane	0.04	5	<LOQ
Acetone	2.08	5000	<LOQ	Acetonitrile	1.17	410	<LOQ
Benzene	0.02	2	<LOQ	Butanes	2.5	2000	<LOQ
Chloroform	0.04	60	<LOQ	Ethanol	2.78	5000	Passed
Ethyl Acetate	1.11	5000	<LOQ	Ethyl Ether	1.39	5000	<LOQ
Ethylene Oxide	0.1	5	<LOQ	Heptane	1.39	5000	<LOQ
Hexane	1.17	290	<LOQ	Isopropyl alcohol	1.39	500	<LOQ
Methanol	0.69	3000	<LOQ	Methylene chloride	2.43	600	<LOQ
Pentane	2.08	5000	<LOQ	Propane	5.83	2100	<LOQ
Toluene	2.92	890	<LOQ	Total Xylenes	2.92	2170	<LOQ
Trichloroethylene	0.49	80	<LOQ				

Listeria Monocytogenes **Passed**
(qPCR)

Specimen Weight: 1005.500 mg

Pieces For Panel: 4 Dilution Factor: 1.000

Analyte	Action Level (cfu/g)	Result
Listeria Monocytogenes	1	Absence in 1g

Xueli Gao
Xueli Gao Lab Toxicologist
Ph.D., DABT

Aixia Sun
Aixia Sun Lab Director/Principal Scientist
D.H.Sc., M.Sc., B.Sc., MT (AAB)



Definitions and Abbreviations used in this report: *Total CBD = CBD + (CBD-A * 0.877), *Total THC = THCA-A * 0.877 + Delta 9 THC, *CBG Total = (CBGA * 0.877) + CBG, *CBN Total = (CBNA * 0.877) + CBN, *Other Cannabinoids Total = CBC + CBDV + THCV + THCV-A, *Total Detected Cannabinoids = CBD Total + CBG Total + CBN Total + THC Total + CBC + CBDV + THCV + THCV-A, *Analyte Details above show the Dry Weight Concentrations unless specified as 12% moisture concentration. (mg/ml) = Milligrams per Milliliter, LOQ = Limit of Quantitation, LOD = Limit of Detection, Dilution = Dilution Factor (ppb) = Parts per Billion, (%) = Percent, (cfu/g) = Colony Forming Unit per Gram (cfu/g) = Colony Forming Unit per Gram, , LOD = Limit of Detection, (µg/g) = Microgram per Gram (ppm) = Parts per Million, (ppm) = (µg/g), (aw) = aw (area ratio) = Area Ratio, (mg/Kg) = Milligram per Kilogram, *Measurement of Uncertainty = +/- 5%



This report shall not be reproduced, without written approval, from ACS Laboratory. The results of this report relate only to the material or product analyzed. Test results are confidential unless explicitly waived otherwise. Accredited by a third-party accrediting body as a competent testing laboratory pursuant to ISO/IEC 17025 of the International Organization for Standardization.



License No. 800025015
FL License # CMTL-0003
CLIA No. 10D1094068

Certificate of Analysis

Compliance Test

KIND SPECTRUM
1624 MARKET ST.
DENVER, CO 80202

Batch # Black Watermelon D8 Gummies
Batch Date: 2021-02-28
Extracted From: Hemp

Sampling Method: MSP 7.3.1 Test Reg
State: Oregon

Order # KIN210302-080049
Order Date: 2021-03-02
Sample # AABBO48

Sampling Date: 2021-03-03
Lab Batch Date: 2021-03-03
Completion Date: 2021-03-09

Initial Gross Weight: 31.736 g

Net Weight per Unit: 4605.000 mg

Pathogenic SAE (qPCR)

Specimen Weight: 279.890 mg

Passed
(qPCR)

Pieces For Panel: 4 Dilution Factor: 1.000

Analyte	Action Level (cfu/g)	Result (cfu/g)	Analyte	Action Level (cfu/g)	Result (cfu/g)
Aspergillus (Flavus, Fumigatus, Niger, Terreus)	1	Absence in 1g	E.Coli	1	Absence in 1g
			Salmonella	1	Absence in 1g

Xueli Gao
Xueli Gao Lab Toxicologist
Ph.D., DABT

Aixia Sun
Aixia Sun Lab Director/Principal Scientist
D.H.Sc., M.Sc., B.Sc., MT (AAB)



Definitions and Abbreviations used in this report: *Total CBD = CBD + (CBD-A * 0.877), *Total THC = THC-A * 0.877 + Delta 9 THC, *CBG Total = (CBGA * 0.877) + CBG, *CBN Total = (CBNA * 0.877) + CBN, *Other Cannabinoids Total = CBC + CBDV + THCV + THCV-A, *Total Detected Cannabinoids = CBD Total + CBG Total + CBN Total + THC Total + CBC + CBDV + THCV + THCV-A, *Analyte Details above show the Dry Weight Concentrations unless specified as 12% moisture concentration. (mg/ml) = Milligrams per Milliliter, LOQ = Limit of Quantitation, LOD = Limit of Detection, Dilution = Dilution Factor (ppb) = Parts per Billion, (%) = Percent, (cfu/g) = Colony Forming Unit per Gram (cfu/g) = Colony Forming Unit per Gram, , LOD = Limit of Detection, (µg/g) = Microgram per Gram (ppm) = Parts per Million, (ppm) = (µg/g), (aw) = aw (area ratio) = Area Ratio, (mg/Kg) = Milligram per Kilogram, *Measurement of Uncertainty = +/- 5%



This report shall not be reproduced, without written approval, from ACS Laboratory. The results of this report relate only to the material or product analyzed. Test results are confidential unless explicitly waived otherwise. Accredited by a third-party accrediting body as a competent testing laboratory pursuant to ISO/IEC 17025 of the International Organization for Standardization.