



DEA No. RA0571996  
FL License # CMTL-0003  
CLIA No. 10D1094068

# Certificate of Analysis

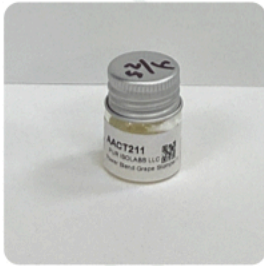
Compliance Test

**White Label Leaf**  
6205 John's Road  
STE 9  
Tampa, Florida 33634

Batch # Power Blend Grape Stomper FM-005  
Test Reg State: Florida  
Batch Date: 2022-04-25  
Extracted From: Hemp

Order # PUR220425-120001  
Order Date: 2022-04-25  
Sample # AACT211

Sampling Date: 2022-04-26  
Lab Batch Date: 2022-04-26  
Completion Date: 2022-04-29  
Initial Gross Weight: 10.109 g



Potency  
Tested

Product Image

Analyte	Dilution (1:n)	LOD (%)	LOQ (%)	Result		Tested (LCUV)
				(mg/g)	(%)	
Delta-8 THC	1000.000	0.000026	0.0015	588.9000	58.8900	
Delta-8 THC-O Acetate	100.000	0.000027	0.0003	106.2000	10.6200	
CBNA	10.000	0.000095	0.0015	4.6350	0.4635	
Delta-9 THC-O Acetate	10.000	0.000077	0.0003	3.8360	0.3836	
CBN	10.000	0.000014	0.0015	3.6460	0.3646	
CBT	10.000	0.0002	0.0015	2.8610	0.2861	
Delta-8 THCV	10.000	0.00004	0.0015	2.5920	0.2592	
CBD	10.000	0.000054	0.0015	0.5970	0.0597	
CBDA	10.000	0.00001	0.0015	0.5890	0.0589	
THCA	10.000	0.000032	0.0015	0.4490	0.0449	
CBC	10.000	0.000018	0.0015	<LOQ	<LOQ	
THCVA	10.000	0.000047	0.0015	<LOQ	<LOQ	
THCV	10.000	0.000007	0.0015	<LOQ	<LOQ	
Exo-THC	10.000	0.00023	0.0015	<LOQ	<LOQ	
CBCA	10.000	0.000107	0.0015	<LOQ	<LOQ	
CBL	10.000	0.000035	0.0015	<LOQ	<LOQ	
CBGA	10.000	0.00008	0.0015	<LOQ	<LOQ	
CBG	10.000	0.000248	0.0015	<LOQ	<LOQ	
CBDVA	10.000	0.000014	0.0015	<LOQ	<LOQ	
CBDV	10.000	0.000065	0.0015	<LOQ	<LOQ	
Delta-9 THC	10.000	0.000013	0.0015	<LOQ	<LOQ	

Potency Summary

<b>Total THC</b> 0.039%	<b>Total CBD</b> 0.111%
<b>Total CBG</b> None Detected	<b>Total CBN</b> 0.771%
<b>Other Cannabinoids</b> 70.439%	<b>Total Cannabinoids</b> 71.361%

Xueli Gao  
Ph.D., DABT  
Lab Toxicologist

Aixa Sun  
Lab Director/Principal Scientist  
D.H.Sc., M.Sc., B.Sc., MT (AAB)



Definitions and Abbreviations used in this report: \*Total CBD = CBD + (CBD-A \* 0.877), \*Total CBDV = CBDV + (CBDVA \* 0.87), \*Total THC = THCA-A \* 0.877 + Delta 9 THC, \*Total THCV = THCV + (THCVA \* 0.87), \*CBG Total = (CBGA \* 0.877) + CBG, \*CBN Total = (CBNA \* 0.877) + CBN, \*Total CBC = CBC + (CBCA \* 0.877), \*Total THC-O-Acetate = Delta 8 THC-O-Acetate + Delta 9 THC-O-Acetate, \*Other Cannabinoids Total = Total Cannabinoids - All the listed cannabinoids on the summary section, \*Total Detected Cannabinoids = Delta610-THC + Delta8-THC + Total CBN + CBT + Delta8-THCV + Total CBG + Total CBD + Total THCV + CBL + Total THC + Total CBC + Total CBDV + Delta10-THC + Total THC-O-Acetate, \*Analyte Details above show the Dry Weight Concentrations unless specified as 12% moisture concentration. (mg/ml) = Milligrams per Milliliter, LOQ = Limit of Quantitation, LOD = Limit of Detection, Dilution = Dilution Factor (ppb) = Parts per Billion, (%) = Percent, (cfu/g) = Colony Forming Unit per Gram (cfu/g) = Colony Forming Unit per Gram, LOD = Limit of Detection, (µg/g) = Microgram per Gram (ppm) = Parts per Million, (ppm) = (µg/g), (aw) = aw (area ratio) = Area Ratio, (mg/Kg) = Milligram per Kilogram, \*Measurement of Uncertainty = +/- 10%



This report shall not be reproduced, without written approval, from ACS Laboratory. The results of this report relate only to the material or product analyzed. Test results are confidential unless explicitly waived otherwise. Accredited by a third-party accrediting body as a competent testing laboratory pursuant to ISO/IEC 17025 of the International Organization for Standardization.