



Certificate of Analysis

Compliance Test

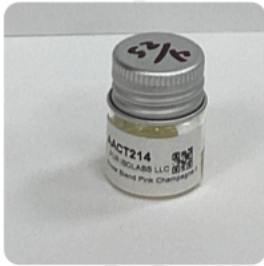
White Label Leaf
6205 John's Road
STE 9
Tampa, Florida 33634

Batch # Power Blend Pink Champagne FM- 005
Test Reg State: Florida
Batch Date: 2022-04-25
Extracted From: Hemp

Order # PUR220425-120001
Order Date: 2022-04-25
Sample # AACT214

Sampling Date: 2022-04-26
Lab Batch Date: 2022-04-26
Completion Date: 2022-04-29

Initial Gross Weight: 9.550 g



Potency Tested

Product Image

Analyte	Dilution (1:n)	LOD (%)	LOQ (%)	Result (mg/g)		Tested (LCUV)
				(mg/g)	(%)	
Delta-8 THC	1000.000	0.000026	0.0015	625.3000	62.5300	
Delta-8 THC-O Acetate	100.000	0.000027	0.0003	105.1000	10.5100	
CBNA	10.000	0.000095	0.0015	4.5730	0.4573	
Delta-9 THC-O Acetate	10.000	0.000077	0.0003	3.8210	0.3821	
CBN	10.000	0.000014	0.0015	3.5420	0.3542	
CBT	10.000	0.0002	0.0015	2.9610	0.2961	
Delta-8 THCV	10.000	0.00004	0.0015	2.5600	0.2560	
CBD	10.000	0.000054	0.0015	0.5920	0.0592	
CBDA	10.000	0.00001	0.0015	0.5800	0.0580	
THCA	10.000	0.000032	0.0015	0.4540	0.0454	
CBC	10.000	0.000018	0.0015	<LOQ	<LOQ	
THCVA	10.000	0.000047	0.0015	<LOQ	<LOQ	
THCV	10.000	0.000007	0.0015	<LOQ	<LOQ	
Exo-THC	10.000	0.00023	0.0015	<LOQ	<LOQ	
CBCA	10.000	0.000107	0.0015	<LOQ	<LOQ	
CBL	10.000	0.000035	0.0015	<LOQ	<LOQ	
CBGA	10.000	0.00008	0.0015	<LOQ	<LOQ	
CBG	10.000	0.000248	0.0015	<LOQ	<LOQ	
CBDVA	10.000	0.000014	0.0015	<LOQ	<LOQ	
CBDV	10.000	0.000065	0.0015	<LOQ	<LOQ	
Delta-9 THC	10.000	0.000013	0.0015	<LOQ	<LOQ	

Potency Summary

Total THC 0.040%	Total CBD 0.110%
Total CBG None Detected	Total CBN 0.755%
Other Cannabinoids 73.974%	Total Cannabinoids 74.879%

Xueli Gao
Ph.D., DABT
Lab Toxicologist

Aixa Sun
Lab Director/Principal Scientist
D.H.Sc., M.Sc., B.Sc., MT (AAB)



Definitions and Abbreviations used in this report: *Total CBD = CBD + (CBD-A * 0.877), *Total CBDV = CBDV + (CBDVA * 0.87), *Total THC = THCA-A * 0.877 + Delta 9 THC, *Total THCV = THCV + (THCVA * 0.87), *CBG Total = (CBGA * 0.877) + CBG, *CBN Total = (CBNA * 0.877) + CBN, *Total CBC = CBC + (CBCA * 0.877), *Total THC-O-Acetate = Delta 8 THC-O-Acetate + Delta 9 THC-O-Acetate, *Other Cannabinoids Total = Total Cannabinoids - All the listed cannabinoids on the summary section, *Total Detected Cannabinoids = Delta10-THC + Delta8-THC + Total CBN + CBT + Delta8-THCV + Total CBG + Total CBD + Total THCV + CBL + Total THC + Total CBC + Total CBDV + Delta10-THC + Total THC-O-Acetate, *Analyte Details above show the Dry Weight Concentrations unless specified as 12% moisture concentration. (mg/ml) = Milligrams per Milliliter, LOQ = Limit of Quantitation, LOD = Limit of Detection, Dilution = Dilution Factor (ppb) = Parts per Billion, (%) = Percent, (cfu/g) = Colony Forming Unit per Gram (cfu/g) = Colony Forming Unit per Gram, LOD = Limit of Detection, (µg/g) = Microgram per Gram (ppm) = Parts per Million, (ppm) = (µg/g), (aw) = aw (area ratio) = Area Ratio, (mg/Kg) = Milligram per Kilogram, *Measurement of Uncertainty = +/- 10%



This report shall not be reproduced, without written approval, from ACS Laboratory. The results of this report relate only to the material or product analyzed. Test results are confidential unless explicitly waived otherwise. Accredited by a third-party accrediting body as a competent testing laboratory pursuant to ISO/IEC 17025 of the International Organization for Standardization.