



DEA No. RA0571996
FL License # CMTL-0003
CLIA No. 10D1094068

Certificate of Analysis

Compliance Test

SAVAGE ENTERPRISES
1 VANDERBILT
IRVINE, CA 92614

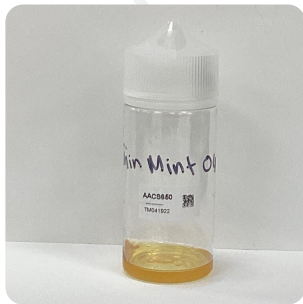
Batch # TM041922
Batch Date: 2022-04-04
Extracted From: Hemp

Test Reg State: Florida

Order # SAV220419-120001
Order Date: 2022-04-19
Sample # AAC5650

Sampling Date: 2022-04-21
Lab Batch Date: 2022-04-21
Completion Date: 2022-05-02

Initial Gross Weight: 30.320 g



Product Image

Potency
Tested

HHC
Tested

Potency 21 (LCUV)

Specimen Weight: 57.120 mg

Tested
(LCUV)

Analyte	Dilution (1:n)	LOD (%)	LOQ (%)	Result (mg/g)	(%)
Delta-8 THC	10.000	0.000026	0.0015	11.4400	1.1440
CBN	10.000	0.000014	0.0015	4.2590	0.4259
CBD	10.000	0.000054	0.0015	2.3400	0.2340
CBDA	10.000	0.00001	0.0015	1.0490	0.1049
THCV	10.000	0.000007	0.0015	0.6930	0.0693
CBNA	10.000	0.000095	0.0015	0.3600	0.0360
CBG	10.000	0.000248	0.0015	0.3220	0.0322
THCVA	10.000	0.000047	0.0015	<LOQ	
CBC	100.000	0.000018	0.0015	<LOQ	
THCA	10.000	0.000032	0.0015	<LOQ	
Exo-THC	10.000	0.00023	0.0015	<LOQ	
Delta-9 THC-O Acetate	10.000	0.000077	0.0003	<LOQ	
CBCA	10.000	0.000107	0.0015	<LOQ	
Delta-8 THCV	10.000	0.00004	0.0015	<LOQ	
Delta-8 THC-O Acetate	10.000	0.000027	0.0003	<LOQ	
CBT	10.000	0.0002	0.0015	<LOQ	
CBL	10.000	0.000035	0.0015	<LOQ	
CBGA	10.000	0.00008	0.0015	<LOQ	
CBDVA	10.000	0.000014	0.0015	<LOQ	
CBDV	10.000	0.000065	0.0015	<LOQ	
Delta-9 THC	10.000	0.000013	0.0015	<LOQ	

Potency Summary

Total THC None Detected	Total CBD 0.326%
Total CBG 0.032%	Total CBN 0.457%
Other Cannabinoids 1.213%	Total Cannabinoids 2.029%

HHC Summary

Analyte	Result (mg/g)	(%)	Total/Unit (mg)
Total HHC	930.634	93.0634%	0.00000

Xueli Gao
Ph.D., DABT
Lab Toxicologist

Aixia Sun
D.H.Sc., M.Sc., B.Sc., MT (AAB)
Lab Director/Principal Scientist



Definitions and Abbreviations used in this report: *Total CBD = CBD + (CBD-A * 0.877), *Total CBDV = CBDV + (CBDVA * 0.87), *Total THC = THCA-A * 0.877 + Delta 9 THC, *Total THCV = THCV + (THCVA * 0.87), *CBG Total = (CBGA * 0.877) + CBG, *CBN Total = (CBNA * 0.877) + CBN, *Total CBC = CBC + (CBCA * 0.877), *Total THC-O-Acetate = Delta 8 THC-O-Acetate + Delta 9 THC-O-Acetate, *Other Cannabinoids Total = Total Cannabinoids - All the listed cannabinoids on the summary section, *Total Detected Cannabinoids = Delta8a10a-THC + Delta8-THC + Total CBN + CBT + Delta8-THCV + Total CBG + Total CBD + Total THCV + CBL + Total THC + Total CBC + Total CBDV + Delta10-THC + Total THC-O-Acetate, *Analyte Details above show the Dry Weight Concentrations unless specified as 12% moisture concentration. (mg/ml) = Milligrams per Milliliter, LOQ = Limit of Quantitation, LOD = Limit of Detection, Dilution = Dilution Factor (ppb) = Parts per Billion, (%) = Percent, (cfu/g) = Colony Forming Unit per Gram (cfu/g) = Colony Forming Unit per Gram, LOD = Limit of Detection, (µg/g) = Microgram per Gram (ppm) = Parts per Million, (ppm) = (µg/g), (aw) = aw (area ratio) = Area Ratio, (mg/Kg) = Milligram per Kilogram, *Measurement of Uncertainty = +/- 10%

This report shall not be reproduced, without written approval, from ACS Laboratory. The results of this report relate only to the material or product analyzed. Test results are confidential unless explicitly waived otherwise. Accredited by a third-party accrediting body as a competent testing laboratory pursuant to ISO/IEC 17025 of the International Organization for Standardization.



DEA No. RA0571996
FL License # CMTL-0003
CLIA No. 10D1094068

Certificate of Analysis

Compliance Test

SAVAGE ENTERPRISES
1 VANDERBILT
IRVINE, CA 92614

Batch # TM041922
Batch Date: 2022-04-04
Extracted From: Hemp

Test Reg State: Florida

Order # SAV220419-120001
Order Date: 2022-04-19
Sample # AAC650

Sampling Date: 2022-04-21
Lab Batch Date: 2022-04-21
Completion Date: 2022-05-02

Initial Gross Weight: 30.320 g



HHC

Specimen Weight: 57.120 mg

Tested (LCMS)

Dilution Factor: 1.000

Analyte	LOQ (%)	Result (mg/g)	(%)	Analyte	LOQ (%)	Result (mg/g)	(%)
(9R)-HHC	7.5E-5	276.0000	27.6	(±)9β-hydroxy-HHC	7.5E-5	0.6340	0.0634
(9S)-HHC	7.5E-5	654.0000	65.4	Total HHC	7.5E-5	930.6340	93.0634

Xueli Gao
Xueli Gao
Ph.D., DABT
Lab Toxicologist

Aixia Sun
Aixia Sun
D.H.Sc., M.Sc., B.Sc., MT (AAB)
Lab Director/Principal Scientist



Definitions and Abbreviations used in this report: *Total CBD = CBD + (CBD-A * 0.877), *Total CBDV = CBDV + (CBDVA * 0.87), *Total THC = THCA-A * 0.877 + Delta 9 THC, *Total THCV = THCV + (THCVA * 0.87), *CBG Total = (CBGA * 0.877) + CBG, *CBN Total = (CBNA * 0.877) + CBN, *Total CBC = CBC + (CBCA * 0.877), *Total THC-O-Acetate = Delta 8 THC-O-Acetate + Delta 9 THC-O-Acetate, *Other Cannabinoids Total = Total Cannabinoids - All the listed cannabinoids on the summary section, *Total Detected Cannabinoids = Delta6a10a-THC + Delta8-THC + Total CBN + CBT + Delta8-THCV + Total CBG + Total CBD + Total THCV + CBL + Total THC + Total CBC + Total CBDV + Delta10-THC + Total THC-O-Acetate, *Analyte Details above show the Dry Weight Concentrations unless specified as 12% moisture concentration. (mg/ml) = Milligrams per Milliliter, LOQ = Limit of Quantitation, LOD = Limit of Detection, Dilution = Dilution Factor (ppb) = Parts per Billion, (%) = Percent, (cfu/g) = Colony Forming Unit per Gram (cfu/g) = Colony Forming Unit per Gram, LOD = Limit of Detection, (µg/g) = Microgram per Gram (ppm) = Parts per Million, (ppm) = (µg/g), (aw) = aw (area ratio) = Area Ratio, (mg/Kg) = Milligram per Kilogram, *Measurement of Uncertainty = +/- 10%

This report shall not be reproduced, without written approval, from ACS Laboratory. The results of this report relate only to the material or product analyzed. Test results are confidential unless explicitly waived otherwise. Accredited by a third-party accrediting body as a competent testing laboratory pursuant to ISO/IEC 17025 of the International Organization for Standardization.